



ISOframe[®] wave

With hidden link

Mounting instructions

Wave modules

Total system heights

Mini 209 cm / 82.3"

Starter kit IS-W-81-S

Extension kit IS-W-81-E

Midi 229 cm / 90.2"

Starter kit IS-W-82-S

Extension kit IS-W-82-E

Maxi 249 cm / 98.0"

Starter kit IS-W-83-S

Extension kit IS-W-83-E

Starter kit complete with:

2 post sets, 2 feet, 1 Flexi-Wave Link,
2 sets corner trim, 1 set kicker and hanger

Extension kit complete with:

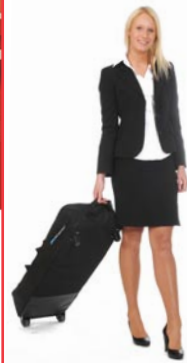
1 post set, 1 foot, 1 Flexi-Wave Link,
1 set kicker and hanger



Accessories

Padded case on wheels

Holds up to a 6 section Wave system.
Item IS-TC-01-MB

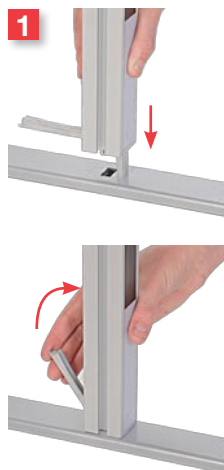


Small graphic tube

to be attached to frame case
Holds up to 6 panels,
Item IS-0850-RTS-S-MB

Large graphic tube

with handle and shoulder strap.
Holds up to 9 panels,
Item IS-0850-RTB-S-MB



Corner trims (see reverse side)



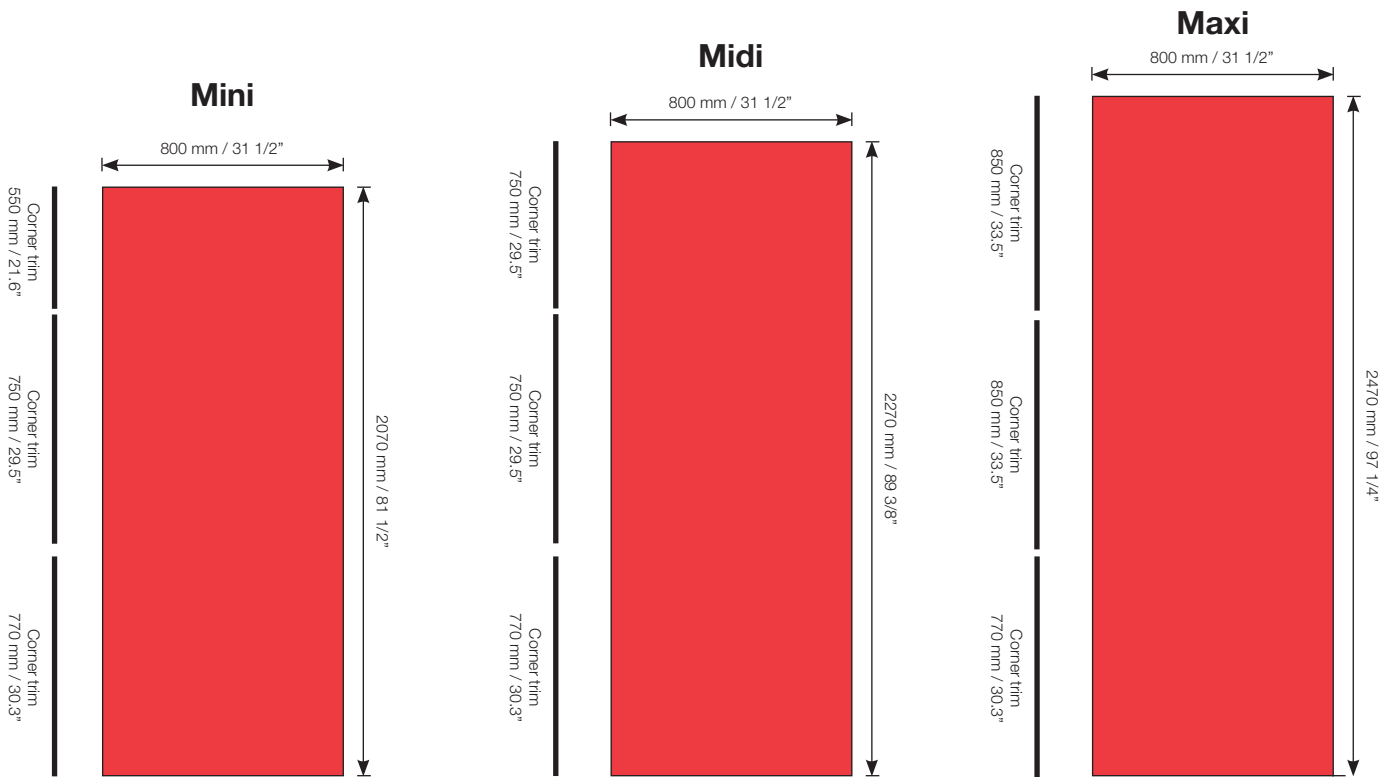
Mark Bric Display Corp.

North America Tel. 800.742.6275 Fax 800.565.9506 E-mail: markbric@markbric.com

Mark Bric Display AB

Worldwide Headquarters Tel. +46 33 480 460 Fax +46 33 480 470 E-mail: display@markbric.se

Graphic production and corner trim



Graphic panel attachments

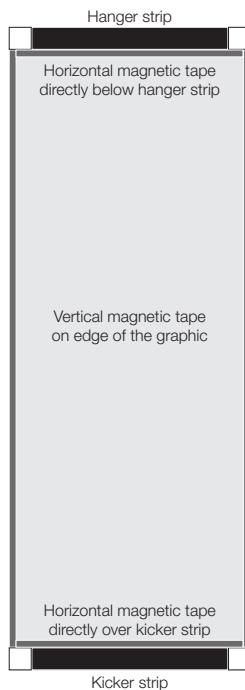
Accessories

Kickers & Hangers

(incl. for the first set of panels)
800 mm / 31 1/5" IS-800-KHN

Magnetic tape (not incl.)
12 mm/0.5" A tape, 30 m / 98 ft. DM-013-AC

Each panel needs:
Mini 5,8 m / 20 ft.
Midi 6,2 m / 21 ft.
Maxi 6,6 m / 22 ft.



Printer material

We recommend the following material:

Poster paper: 180 gr / 0.4 lb.
The printed graphic panels must be laminated before use.
Front side: 125 microns (0,125 mm) / 0.005" "deep crystal"
Reverse side: 250 microns (0,250 mm) / 0.010" "stop light"

Polyester film: 330-370 microns (0,350 mm) / 0.013-0.015"
Top laminate: 125 microns (0,125 mm) / 0.005" "deep crystal"



Kicker



Hanger

Mounting of Kickers and Hangers

Kickers and hangers to be fixed at the bottom and at the top of the graphic panels (reverse side).

Mounting of Magnetic Tape

Magnetic tape to be fixed **horizontally** directly over/under kicker/hanger strip. Magnetic tape to be fixed **vertically** along each side of the graphic panels.

IMPORTANT Carefully mount the magnetic tape slightly inset from the edge of the graphic panel by approximately 0,25 mm / 0.010". Once mounted, a very thin straight white line should show between the edge of the graphic and the outside edge of the magnetic tape. Do not exceed 0,5 mm / 0.020".

Application Techniques

To obtain optimum adhesion, the bonding surfaces must be well unified, clean and dry. Typical surface cleaning solvents are isopropyl alcohol/water mixture (rubbing alcohol) or heptane.

Note: Be sure to follow solvent manufacturer's precautions and directions for use when using solvents.